

# Instructions for installing and using the VPN client to access library resources for off-campus users

1. Go to <https://downloads.its.psu.edu/>.
2. Log-in on the **WebAccess** page with your Penn State access ID and password.
3. On the downloads homepage, click **Connecting to Penn State**.
4. Next to “VPN – Virtual Private Network,” click on the appropriate operating system.

Connecting to Penn State			
Brown TN3270		<b>Macintosh</b>	
dot1x - dot1x Supplicant	<b>Windows</b>		
Hummingbird HostExplorer 2008	<b>Windows</b>		
VPN - Virtual Private Network	<b>Windows</b>	<b>Macintosh</b>	<b>Unix/Linux</b>

to authenticate to wireless networks on campus and is needed for resources restricted to  
<http://aset.its.psu.edu/vpn/>

---

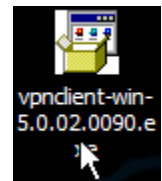
Windows	<b>Version: 5.0.02.0090</b>	(10 MB)
---------	-----------------------------	---------

---

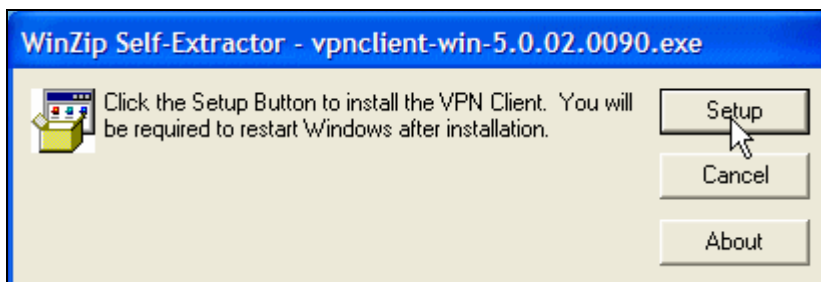
The Pennsylvania State University ©2004. All rights reserved.

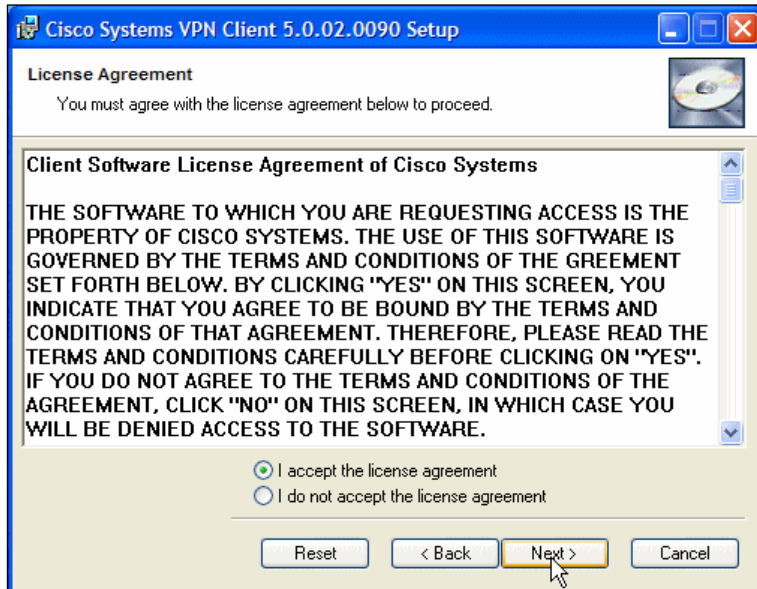
5. Click on the version number (to the right of the operating system name).

6. Save the file to your desktop.
7. When the download is done, open (double-click) the file ending in “.exe” on your desktop.



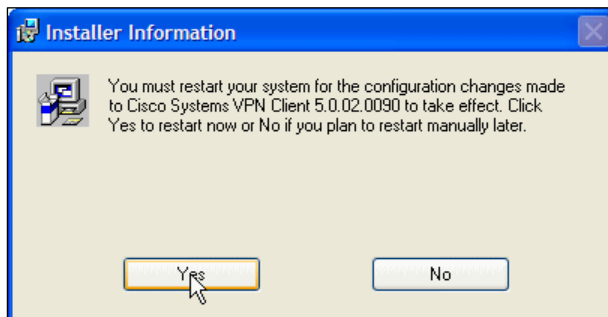
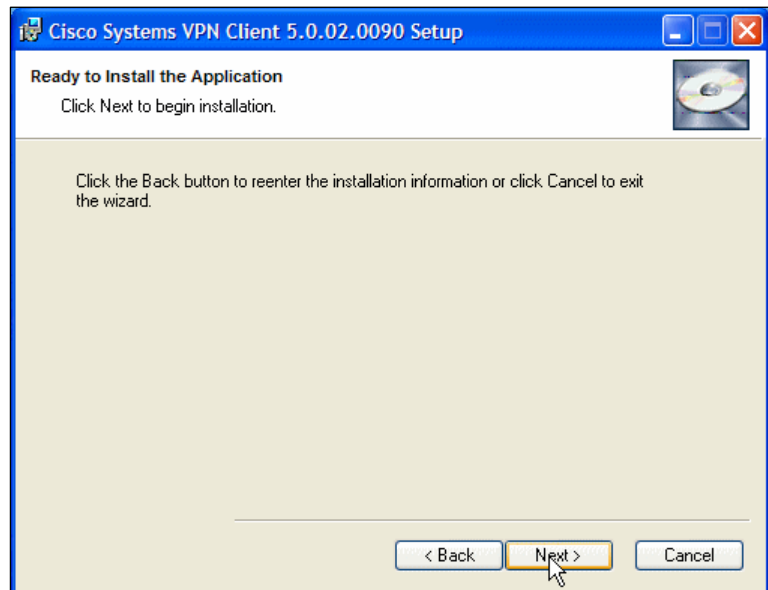
8. In the “WinZip Self-Extractor” window, click **Setup**.





9. In the “Cisco Systems VPN Client Setup” window, click **Next**. Then choose to accept the license agreement and click **Next** again.

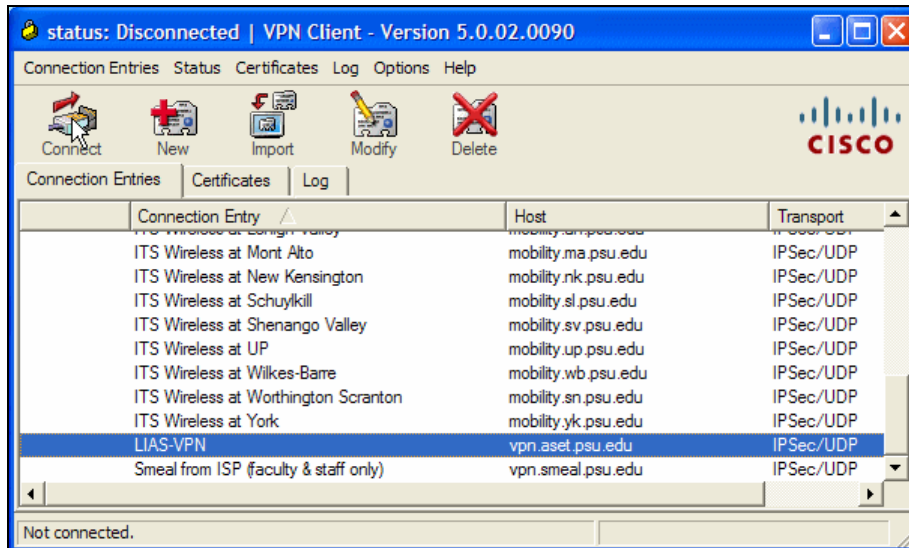
10. Click **Next** to accept the default destination for the program files. Then click **Next** to begin the installation.



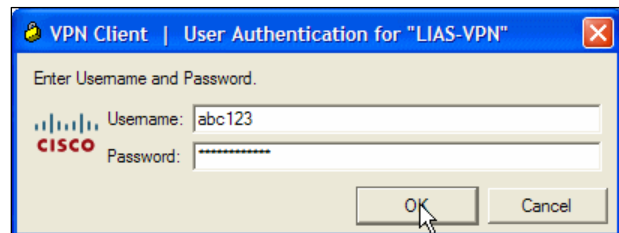
11. Click **Finish**. Then close all other applications and click **Yes** in the “Installer Information” window to restart the computer.


12. Once your computer restarts, click on **Start > All Programs > Cisco Systems VPN Client > VPN Client**. (It will probably be at the bottom of your programs list.)

13. In the VPN Client window, choose **LIAS-VPN** and click **Connect**.



14. Enter your Penn State access ID and password and click **OK**.



15. You should see a lock icon  in the taskbar once you're connected. Later, you can right-click on this icon and choose **Disconnect** when you want to close the connection.

16. Open your browser and go to <http://www.libraries.psu.edu>. You will be able to access all of the libraries' databases.

AM 5/26/09